

# MONTHLY MEMBERSHIP PROGRESS REPORT

LOCATION INDIA

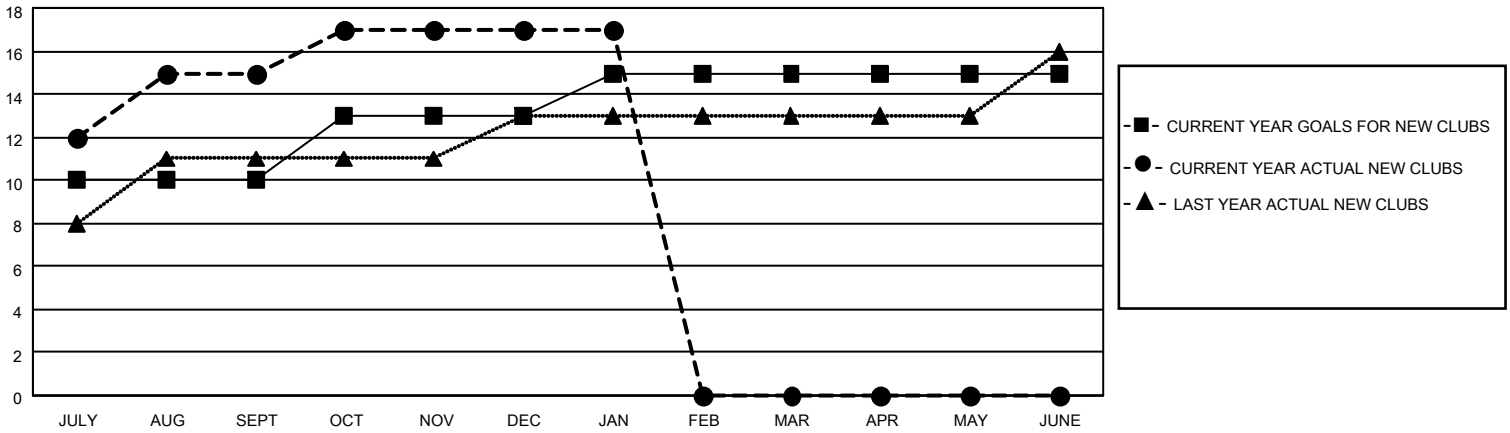
District 322 F

Results as of: 1/31/2022

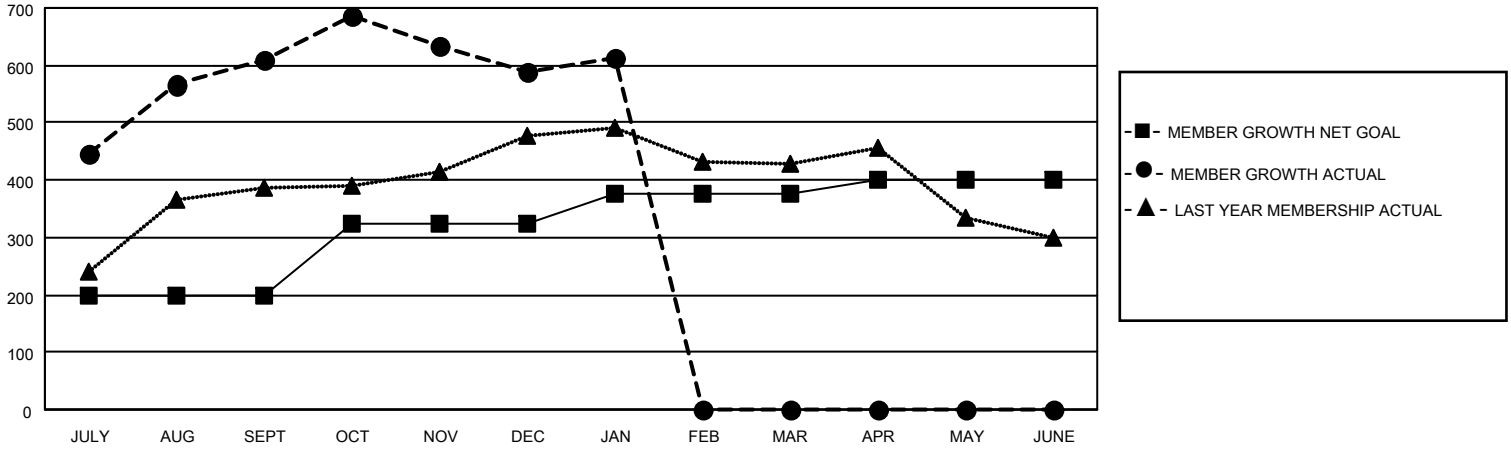
Clubs			
RESULTS FOR 2021-2022			
QUARTER	NEW CLUB GOAL	NEW CLUBS	DROPPED CLUBS
JULY/AUG/SEPT	10	15	0
OCT/NOV/DEC	3	2	2
JAN/FEB/MAR	2	0	0
APR/MAY/JUNE	0	0	0

Members			
RESULTS FOR 2021-2022			
QUARTER	MEMBER GROWTH NET GOAL	MEMBER GROWTH ACTUAL	DROPPED MEMBERS ACTUAL (including transfers)
JULY/AUG/SEPT	200	688	68
OCT/NOV/DEC	125	125	142
JAN/FEB/MAR	50	47	23
APR/MAY/JUNE	25	0	0

**GOALS AND ACTUAL NEW CLUBS CUMULATIVE**



**GOALS AND ACTUAL MEMBERS CUMULATIVE**



**DROPPED CLUBS: 2**

**93 CLUBS OF 138 ADDED 1 OR MORE NEW MEMBERS**

**GENDER DISTRIBUTION**

MALE	3,265 (71.57%)
FEMALE	1,297 (28.43%)
NON BINARY	0 (0.00%)
PREFER NOT TO ANSWER	0 (0.00%)

**DROPPED MEMBERS**

[CLICK HERE FOR CUMULATIVE MEMBERSHIP DATA](#)

DECEASED	8
CLUB CANCELLED	34
OTHER	191
<b>TOTAL</b>	<b>233</b>

TOTAL FAMILY UNIT MEMBERS 2,177

FAMILY MEMBERS PAYING HALF DUES 1,361